



## UPDATE RELEASE COMPILATION

This document details all updates to EXTOL Business Integrator v3, since its original release. This includes updates to both the Studio and Server. The latest (cumulative) version of the Studio/Server update can be obtained via the in-product update functionality within the product. This process is detailed in the EBI v3 User Guide | System Maintenance help topic. Please contact EXTOL Technical Support at (866) 398-6524 if you require any assistance.

### **(NEW)** EBI v3.2.3 STUDIO

**(OCT 2015)**

This service release provides several updates, fixes, and enhancements to the following Studio functionality.

#### **Database Refresh Wizard**

- Enhanced the UI to now display a list of objects that may be affected during the refresh process.
- Corrected an issue where the decimal digits in a Database Schema were overwritten.

### **(NEW)** EBI v3.2.4 SERVER

**(OCT 2015)**

This service release provides an update to the following Server functionality.

#### **Web Services**

- Corrected an issue in which Web Service SOAP requests were timing out due to resource leaks.

\*Please note: There are no dependencies between the above Studio and Server updates.

### EBI v3.2.3 SERVER

**(OCT 2015)**

This service release corrects an issue where some Web Service Provider processes could sometimes stop or hang indefinitely until a server restart. The issue occurred when the server was under heavy load.



## EBI v3.2.2 STUDIO

(SEPT 2015)

This service release provides several updates, fixes, and enhancements to the following Studio functionality.

### Project Generator

- An issue where the Project Generator fails to advance when the first element of the Interchange Trailer of EDI Sample data contained more than one character has been corrected.

### Local Test Server/Studio Dependency Check

- The dependency check between the Local Test Server and the Studio has been made less restrictive.

## EBI v3.2.2 SERVER

(SEPT 2015)

This service release provides several updates, fixes, and enhancements to the following Server functionality.

### Deployment Enhancements

- The issue that resulted in the deployment process hanging has been corrected.
- The issues resulting in the uninstallation of dependent projects when deployment fails has been corrected.

## EBI v3.2.1 STUDIO

(JULY 2015)

This service release provides several updates, fixes, and enhancements to the following Studio functionality.

### Database Refresh Wizard

- Enhancements and fixes to this feature include a reduction in the amount of time when populating tables and rows in a Data Source, a fix to prevent the overwriting of implied decimal data, and an enhanced option to select specific tables when using the Wizard.
- Additional messaging has been provided when populating or updating Database Schemas and Data Sources. This explains possible effects to Adapters and Schemas when using Database Refresh functionality. The message is provided *before* the update is made.



#### Web Service connection issue

- An issue in which the Business Process task used to connect to a REST web service was referencing the incorrect Keystore has been corrected.

#### Ruleset Editor bug fixes

- An issue that resulted in repeat values when copying and pasting in a Ruleset has been corrected.
- An issue when creating variables from the Ruleset editor has now been corrected.

#### EBI v3.2.1 SERVER

(JULY 2015)

This service release corrects an issue which prevented the viewing of raw EDI data in the EXTOL Dashboard.

#### NEW SERVER & STUDIO DEPENDENCY

(MAR.2015)

This release marks the first time that a dependency exists between the EBI Studio and the EBI Server versions. **EBI v3.2.0 Studio requires EBI v3.2.0 Server** (both the Local Test Server and any remote Servers). In addition, EXTOL has established semantics behind the version numbering scheme so you can quickly determine dependencies between your EBI Studio and Server.

EBI uses a *Major.minor.service* scheme for version numbers in both the Studio and Server. For example: The current version **v3.2.0** indicates the following: **Major=3, minor=2, service=0**.

The *Major* and *minor* version numbers should match between the Studio and a Remote Server. You may temporarily leave a Remote Server, such as your Production installation, at a lower version while testing the newer version on your Remote Test/QA Server. This will allow you to maintain existing projects on your Remote Production Server. However, you cannot install new projects created with any updated dependencies to the Remote Production Server until it is updated to a compatible Studio/Server version.

Service versions may vary independently (in the context of the same Major and minor version), and indicate no dependency between Studio and Server.

As a result, there now exists new messaging in the EBI Studio meant to assist and ensure correct Studio and Server dependencies when updating or deploying. These messages support version dependency by:

- Notifying you of dependencies when performing Studio or Server updates. For example, updates containing an increase in the *minor* version number indicate a dependency between the EBI Studio and the EBI Server.



- Generating error messages when attempting to install a Project from a Studio that is incompatible with the particular Server version.

#### EBI SERVER v3.2.0

(MAR.2015)

EXTOL expanded its library of APIs in the EBI Server. These new APIs introduced a dependency between EBI Studio and EBI Server.

#### EBI STUDIO v3.2.0

(MAR.2015)

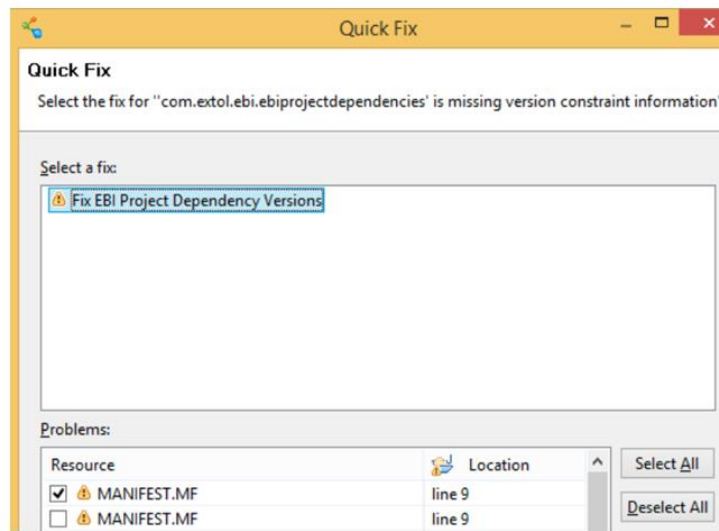
The following enhancements, fixes, and changes to the EBI Studio experience are now available; many have resulted from Customer requests and suggestions, as well as internal discovery.

- **New Data Type:** the *Implied Decimal* data type has been added to EBI's Database syntax. Commonly found in some JD Edwards numeric data columns, this new data type works in conjunction with the *Move Numeric* Ruleset Action.
- **Text box sizing issue:** In the Flat File Schema editor, the text box for the delimiter was dynamically sized (based on the value of the delimiter) incorrectly in some cases. This has been corrected.
- **Relaxed validation:** In the XSD importer, the validation rules were more stringent than W3C XSD requires. In this case, the XSD did not specify a maximum length or fraction digits, but EBI Studio was requiring them.
- **Enhancements to the EBI Project Generator:** Several enhancements have been made that allow for the creation of Project, Packages, and objects based on your own naming conventions; the previous version applies more stringent naming conventions when using the Project Generator. These limitations have been removed. Secondly, a previous issue in which an internal build process caused performance issues has been resolved. This should result in a faster completion time.
- **Documentation updates:** Updates are available in the existing Product Help.

- **Quick Fix:** With the new Studio/Server dependency, all new Projects will be created with dependency versions. However, any Projects that were created before this dependency existed will not have dependency versions assigned them. As a result, upon a Studio update, these Projects will appear with warnings in the Problems view. This is because these Projects do not have a specific version requirement that is required as part of the Project /Server dependency. A Quick Fix features allows you to “stamp” a Project with some necessary versioning information. Two ways to use this feature are described here:

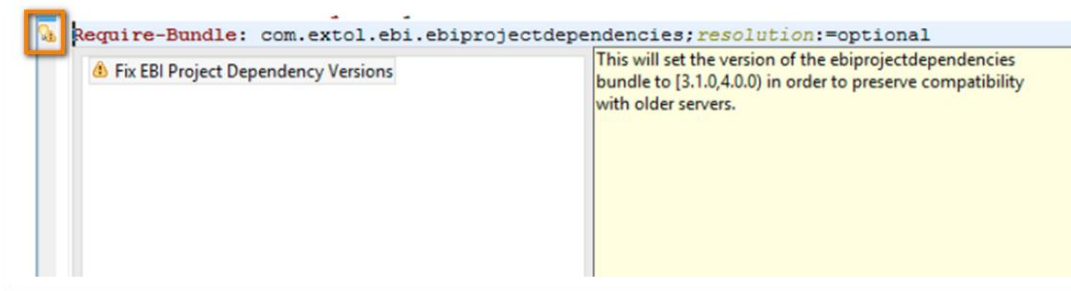
1. **From the Studio:**

- a. From the *Problems* view, right-click on a warning (or multiple warnings) and select the *Quick Fix* option from the context menu.
- b. Select or deselect warnings from the *Quick Fix* window, shown below. By selecting just those Projects that have “projectdependencies” listed in the name, you can apply a *common applicable quick fix*. If there is no common Quick Fix, you will receive a message explaining there are no common fixes available.



2. **From the Manifest file (MANIFEST.MF tab)**

- a. Double click the warning or open up the manifest file in the editor (go to the MANIFEST.MF tab). You should now see a lightbulb icon next the warning symbol (shown in next image).
- b. Click the lightbulb icon, and click the Quick Fix.



## EBI SERVER V3.1.1

(OCT.2014)

EBI Server v3.1.1 provides compatibility with the EXTOL Dashboard v2.2.

## EBI SERVER v3.1.2

(OCT.2014)

EBI Server v3.1.2 includes validation support for the EDIFACT standards D 10B through D 14A.

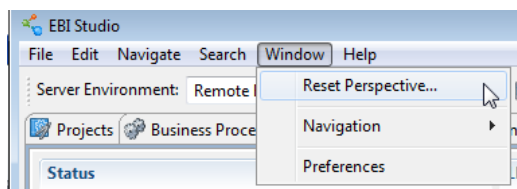
**Note:** This Server update should be completed before using the above standards in any deployed objects or Projects.

## EBI STUDIO v3.1.1

(DEC.2014)

This current Studio update includes the following features and enhancements:

Previously the EDI Project Wizard, the new **EBI Project Generator** now includes non-EDI Projects, and has a completely re-vamped interface to provide an easy, intuitive user experience, in order to help you quickly generate Projects by using an existing Project as a template. EBI replicates the template Project and its resources, updates new resource names, re-configures enveloping and trading partner information (for EDI Projects), maintains resource dependencies, and updates other attributes and values to automatically reflect the newly generated Project. **Please note:** To complete the Studio update, you must reset the EBI Workbench perspective (Window | Reset Perspective option).



In addition, this update includes:

- Several bug fixes and minor enhancements.
- Updated Help content for the EBI Project Generator.

October 2015

6