



Create Log Filter Groups and Filters

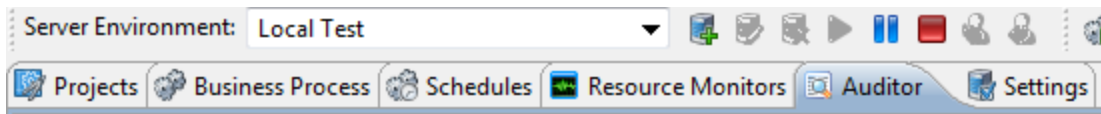
Below we learn how to customize the **Auditor in the Admin Console** with Filter Groups and Filters. Filters will allow EBI 3 users to analyze activities and triage errors.

1 ADMIN CONSOLE - AUDITOR

First step for the EBI user to create their Log Filter Groups and Filters is by going to the Admin Console perspective.

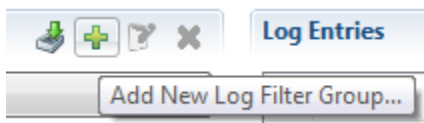


Then the EBI user will need to click on the Auditor tab at the top.

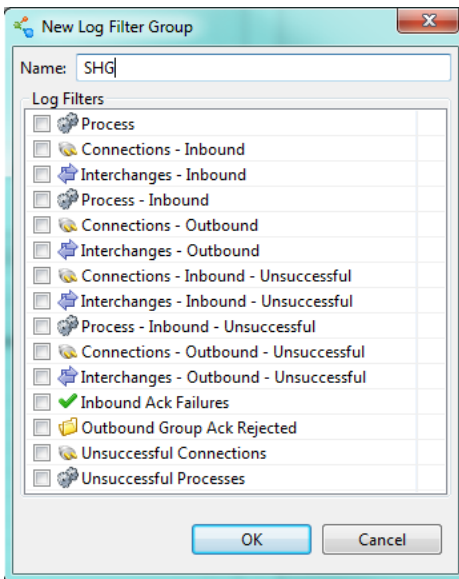


2 CREATE A LOG FILTER GROUP

The next step would be for the EBI user to create their Log Filter Group. The user can do this by clicking on the Add New Log Filter Group icon near the top.



Once that is clicked the user can name their group. In this example we named the group SHG.



3 ADDING LOG FILTERS TO THE LOG FILTER GROUP

Next the EBI user will want to do is add different Log Filters to their Log Group.

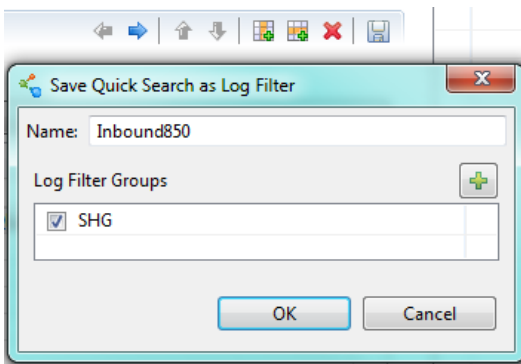
In this example we will be adding an Inbound 850 BPS Log Filter to the Log Filter Group. First the EBI user will select the Add Expression icon since there already is a Group started.



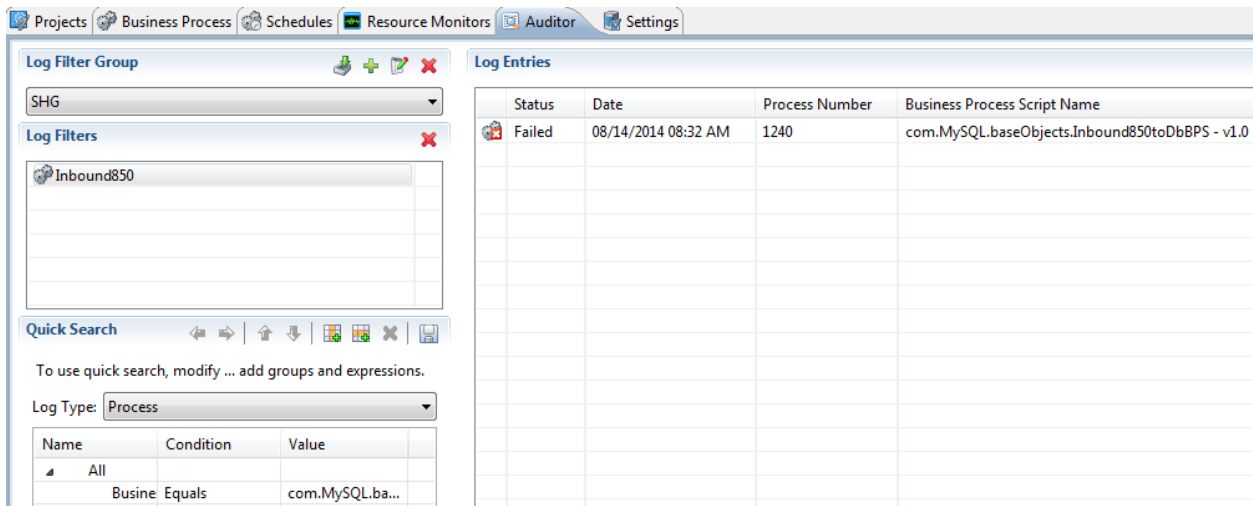
Once selected the user can select what they want to filter on in the Quick Search section. Here the filter will be on a Business Process Script Id. Then Equals or Not equals can be selected in the Condition column. Our first BPS will be the Inbound 850 so we select that in the Value column.

Now the EBI user can save that Quick Search and name the Log Filter. Select the Save Quick Search as Log Filter icon.

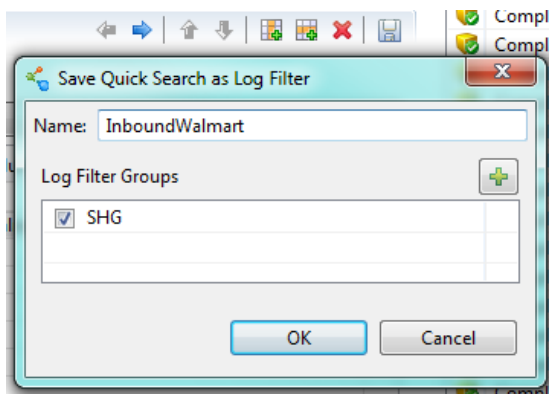
Here it will be Inbound850. Then select the Log Filter Group that it will be a part of which will be SHG.



Now the user can select their Log Filter and it will show only Inbound 850 BPS processes in the Log Entries.



Another Log Filter the EBI user could create could be for a specific Route. On the Log Type dropdown select Route. Next the EBI user will select Add Expression. Here we will search on where the Sender ID contains Walmart. Select the Save Quick Search as Log Filter icon.



Now the user can select their Log Filter and it will show only Inbound Walmart processes with that Sender ID in the Log Entries.

The screenshot shows the Auditor application interface with the following components:

- Log Filter Group:** A dropdown menu showing "SHG".
- Log Filters:** A list containing "Inbound850" and "InboundWalmart".
- Quick Search:** A section with a "Log Type" dropdown set to "Route" and a table below it.

Name	Condition	Value
All		
Sender ID	Contains	Walmart
- Log Entries:** A table listing log entries with their status and date.

Status	Date
Failed	08/14/2014 08:32 AM
Failed	08/14/2014 08:23 AM
Completed	08/13/2014 02:37 PM
Completed	08/13/2014 02:37 PM
Completed	08/13/2014 02:25 PM
Completed	08/13/2014 02:20 PM
Failed	08/13/2014 02:10 PM
Failed	08/13/2014 02:08 PM
Completed	08/13/2014 01:52 PM
Completed	08/13/2014 01:44 PM
Completed	08/13/2014 01:42 PM
Completed	08/13/2014 01:25 PM
Completed	08/13/2014 01:20 PM
Completed	08/13/2014 01:15 PM
Completed	08/13/2014 01:10 PM
Completed	08/13/2014 12:30 PM

These Log Filter Groups are user specified so everyone has their own Log Filter Groups and Log Filters on their system. If the EBI user would want to share them they could give others the file that is located in an exportable state in the current studio workspace. They are located in the logFilterGroups folder.

Just select the Import Log Filter(s) button and select the file.

