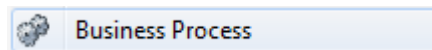


# Set-up Simple Data Purge Business Process

Logging and data purging can become an after-thought when EXTOL Business Integrator (EBI) 3 Server is set-up.

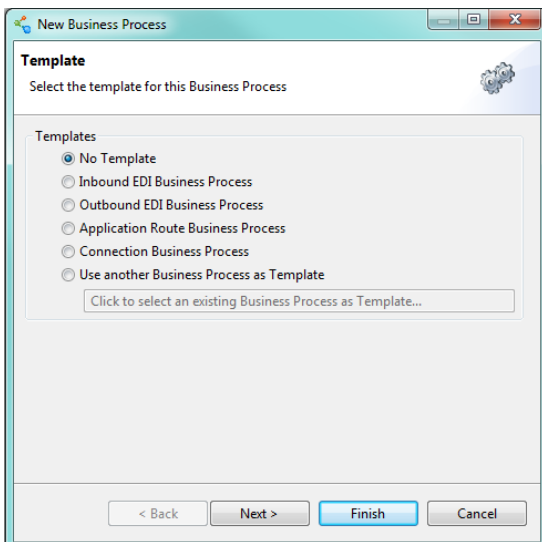
In my experience there can be opposite ends of the spectrum schools of thought in data retention. There can be the business need to keep data for a rolling 365 days. There are some companies that only want to keep data for a rolling 7 days. Below we will address both scenarios.

## 1 CREATE THE BUSINESS PROCESS



First step is to create a No Template Business Process.

**File > New > Business Process**

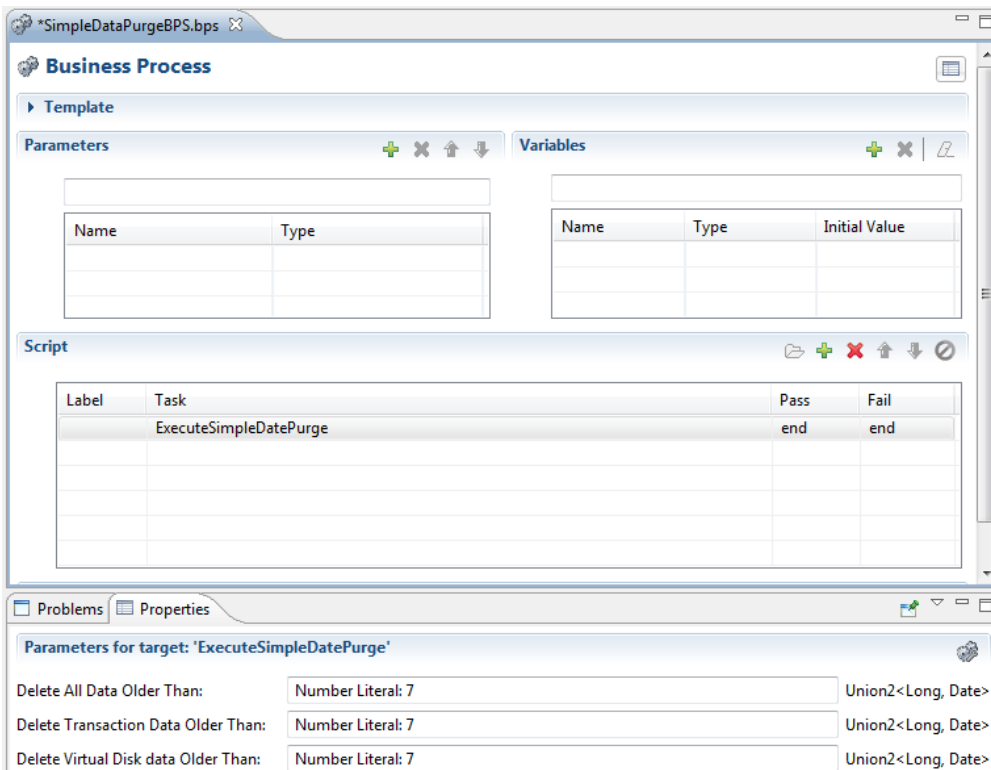


## 2 CREATE BUSINESS PROCESS TASKS

The only task the EBI user needs in the Business Process is **ExecuteSimpleDataPurge**. The EBI user will need to make the Pass and Fail End.



For the values, the EBI user can select a specific date or a number of days before when the Business Process is set to run. In this example, the EBI user will be purging each one 7 days prior to when the Business Process is set to run.



### 3 CREATE A PROCESS SCHEDULER

Next we will need to create a Process Scheduler to run the Business Process.

**File > New > Process Scheduler**

Below, the EBI user will run the SimpleDataPurge every Wednesday at 2:30 pm.

